

## Redmond East Business Campus Redmond Hilltop

6244 185th Avenue NE, Redmond, WA



### AMENITIES:

- Close proximity to multiple retail centers and residential neighborhoods
- High tech business park environment
- High ceilings, prominent signage, good parking
- Free standing building

### SPACE AVAILABLE:

- Suite 250 - 8,099 SF (Available immediately)
- Suite 240 - 16,257 SF (Available July 1, 2011)

Full Floor Available = 24,356 SF



*For more information, contact:*

**Al Hodge**  
425.646.5240  
hodge@broderickgroup.com

**Paul Jerue**  
425.646.5223  
jerue@broderickgroup.com

**Chris Langer**  
425.646.5228  
langer@broderickgroup.com

[www.broderickgroup.com](http://www.broderickgroup.com)

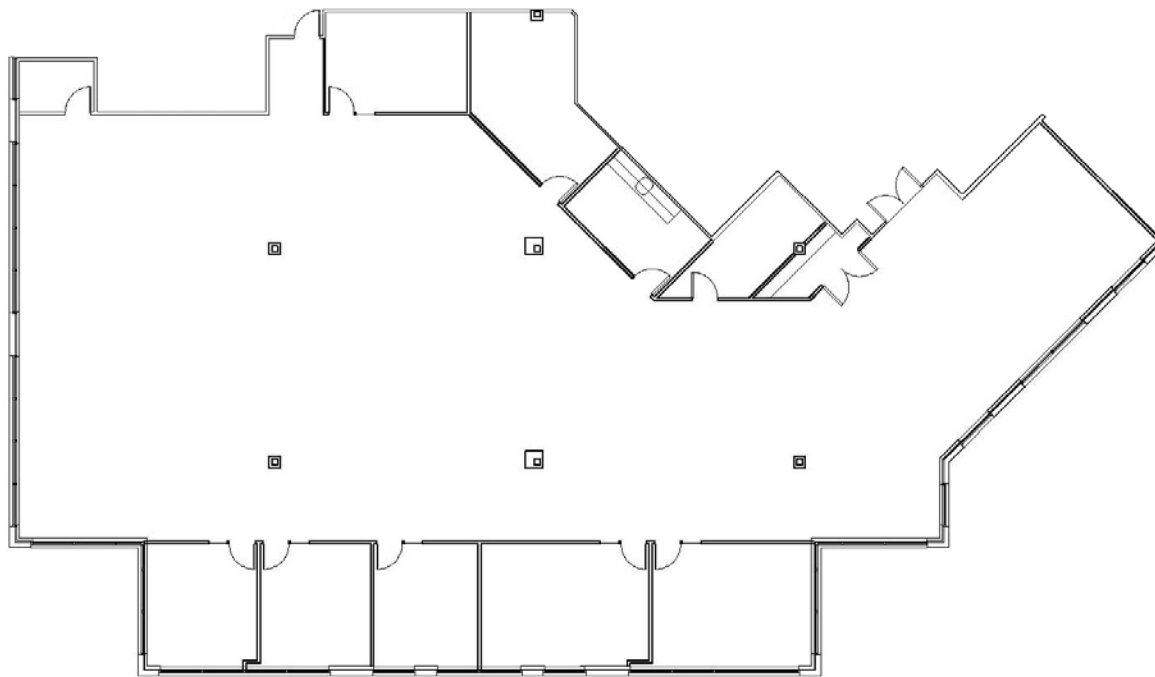
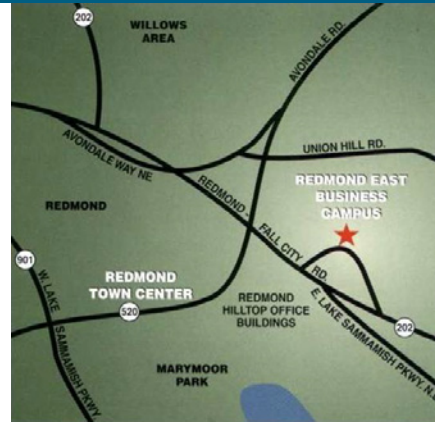


# Redmond East Business Campus Redmond Hilltop

6244 185th Avenue NE, Redmond, WA

Suite 250 - 8,099 SF

SECOND FLOOR PLAN



## AVAILABLE SPACE

### Suite 250

Second Floor: 8,099 SF

- Office area built out with 5 private offices
- Conference room
- Kitchen area
- Copy/work room



**ARDEN** realty, inc.

[www.ardenrealty.com](http://www.ardenrealty.com)

**BRODERICK**  
• GROUP •

Al Hodge 425.646.5240 Paul Jerue 425.646.5223 Chris Langer 425.646.5228

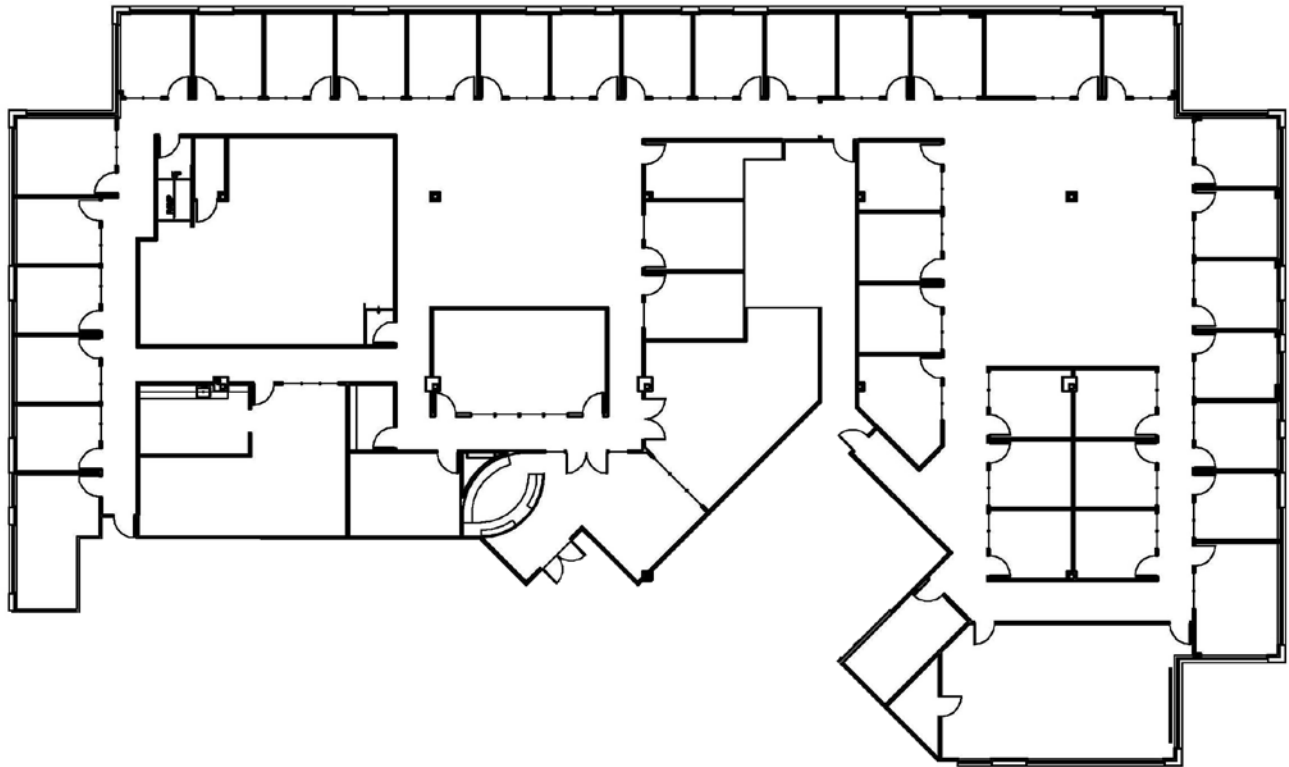


# Redmond East Business Campus Redmond Hilltop

6244 185th Avenue NE, Redmond, WA

Suite 240 - 16,257 SF

SECOND FLOOR PLAN

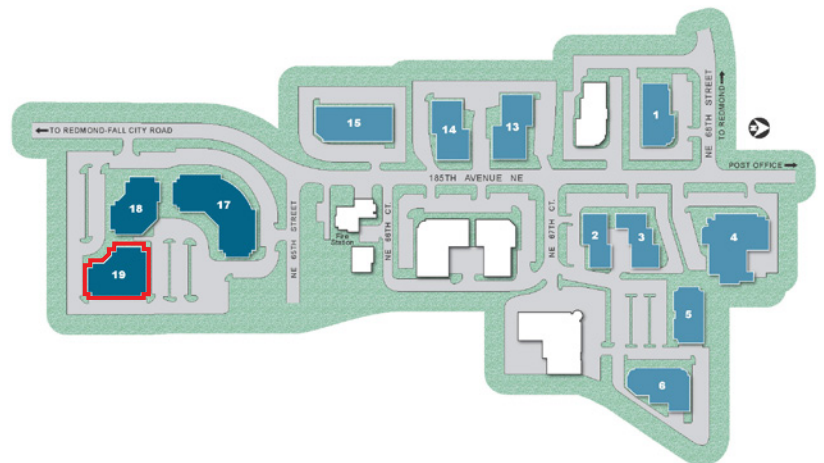


## AVAILABLE SPACE

### Suite 240

Second Floor: 16,257 SF

- Office area built out with 40 private offices
- Three conference rooms
- Kitchen area
- Copy/work room



**ARDEN** realty, inc.

[www.ardenrealty.com](http://www.ardenrealty.com)

**BRODERICK**  
GROUP

Al Hodge 425.646.5240 Paul Jerue 425.646.5223 Chris Langer 425.646.5228

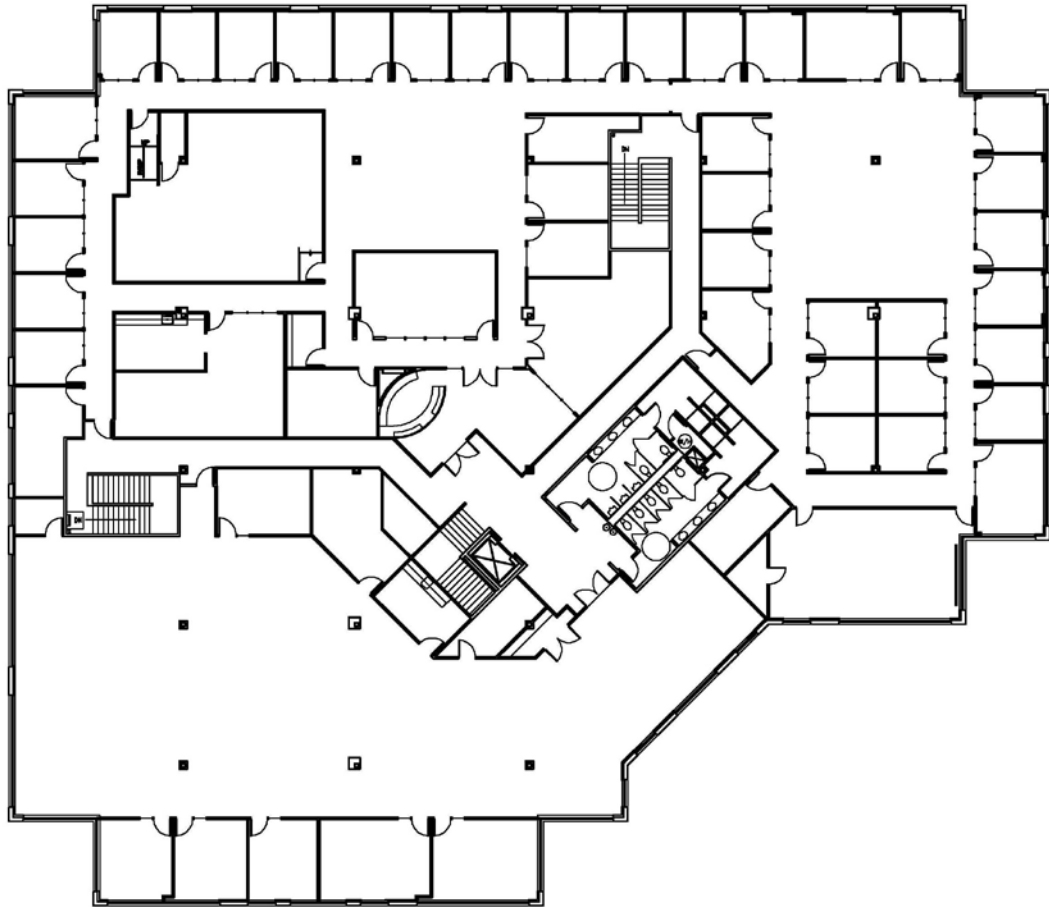


# Redmond East Business Campus Redmond Hilltop

6244 185th Avenue NE, Redmond, WA

Full Floor Available - 24,356 SF Total

SECOND  
FLOOR  
PLAN

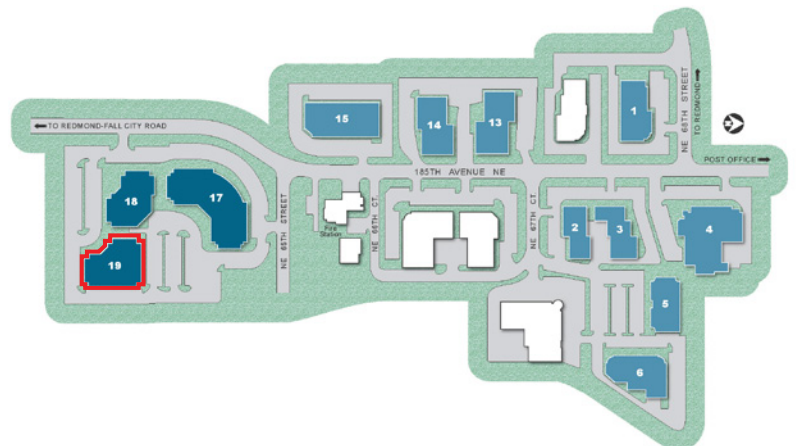


## AVAILABLE SPACE

**Suites 240/250**

Entire Second Floor: 24,356 SF Total

- Office area built out with 45 private offices
- Four conference rooms
- Two kitchen areas
- Copy/work rooms



**ARDEN** realty, inc.

[www.ardenrealty.com](http://www.ardenrealty.com)

**BRODERICK**  
• GROUP •

Al Hodge 425.646.5240 Paul Jerue 425.646.5223 Chris Langer 425.646.5228