

LAKEVIEW PLACE

6725 116th Ave NE | Kirkland, Washington 98033



AVAILABLE SPACE:
5,346 SQUARE FEET



Breathtaking View of Lake Washington, Seattle skyline & Olympics from Lakeview Place

BUILDING FEATURES

- Best freeway access on Eastside
- Park & Ride across the street for transit options
- Views of Lake Washington & Olympic Mountains
- Free secured covered parking
- Class A construction and finishes

SPACE FEATURES

Suite 201: 5,346 RSF on the 2nd floor

- Perimeter offices
- Work areas
- Views of Olympic Mountains and Lake Washington



For further information or to schedule a tour, please contact:



Commercial Real Estate Services

Al Hodge
425.646.5240
hodge@broderickgroup.com

Trevor Clark
206.838.7638
clark@broderickgroup.com

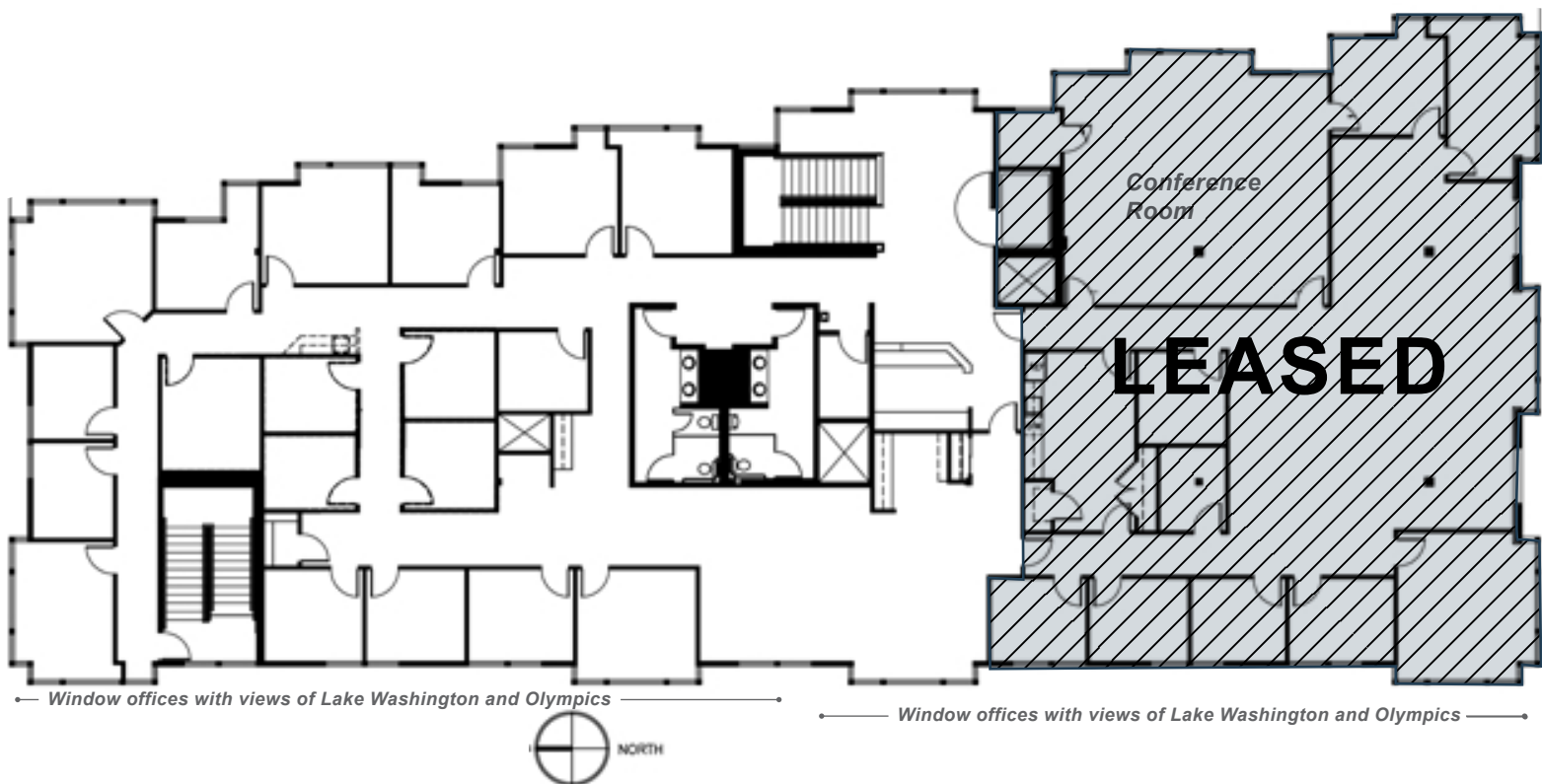
Broderick Group, Inc.
10500 NE 8th Street, Suite 900
Bellevue, WA 98004
Main: 425.646.3444
Fax: 425.646.3443
www.broderickgroup.com

LAKEVIEW PLACE

6725 116th Ave NE | Kirkland, Washington 98033



View of Lake Washington & Seattle Skyline from Lakeview Place



FLOOR PLAN

SUITE 201 - 5,346 RSF

SECOND FLOOR

SPACE FEATURES

- Western views of Olympic Mountains and Lake Washington
- 5,346 rentable square feet
- Perimeter offices, workspaces, and conference rooms
- Perimeter offices have large windows with beautiful western views

For further information or to schedule a tour, please contact:



Commercial Real Estate Services

Al Hodge
425.646.5240
hodge@broderickgroup.com

Trevor Clark
206.838.7638
clark@broderickgroup.com

Broderick Group, Inc.
10500 NE 8th Street, Suite 900
Bellevue, WA 98004
Main: 425.646.3444
Fax: 425.646.3443
www.broderickgroup.com

LAKEVIEW PLACE

6725 116th Ave NE | Kirkland, Washington 98033

SITE PLAN



← North

> **Best Freeway Access on the Eastside** <

Lakeview Place



Building Main Entrance



Building Main Lobby



For further information or to schedule a tour, please contact:



Commercial Real Estate Services

Al Hodge

425.646.5240

hodge@broderickgroup.com

Trevor Clark

206.838.7638

clark@broderickgroup.com

Broderick Group, Inc.
10500 NE 8th Street, Suite 900
Bellevue, WA 98004
Main: 425.646.3444
Fax: 425.646.3443
www.broderickgroup.com

LAKEVIEW PLACE

6725 116th Ave NE | Kirkland, Washington 98033



BUILDING FACT SHEET

Location: 6725 116th Ave. NE
Kirkland, Washington 98033

Jurisdiction: City of Kirkland

Total Building Size: 21,694 rentable square feet

Available SF: Suite 201: 5,346 RSF on the 2nd floor

Construction: Wood Frame over concrete garage – fully sprinklered

Number of Floors: Three (3): one (1) level parking, two (2) levels office

Parking: 75 parking stalls with approximately 50% in garage

Elevators: One hydraulic passenger serving all three levels

Quoted Lease Rate: \$17.50 per square foot, NNN

Amenities/Highlights:

- Best freeway access on Eastside
- Park & Ride across the street for transit options
- Views of Lake Washington & Olympic Mountains
- Free secured covered parking
- Class A construction and finishes

Building Architect: LDG Architects

Developer: MJR Development

For further information or to schedule a tour, please contact:



Commercial Real Estate Services

Al Hodge
425.646.5240
hodge@broderickgroup.com

Trevor Clark
206.838.7638
clark@broderickgroup.com

Broderick Group, Inc.
10500 NE 8th Street, Suite 900
Bellevue, WA 98004
Main: 425.646.3444
Fax: 425.646.3443
www.broderickgroup.com