

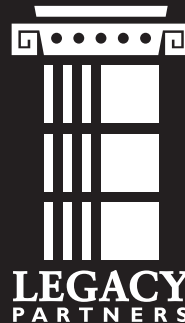
KEY BANK BUILDING

10655 NE 4th Street | Bellevue, Washington



HOME

- The newly renovated Key Bank Building is a 96,571 sf office building located in the heart of Downtown Bellevue
- Nine-story building featuring sweeping views of Downtown Bellevue, Lake Washington and Seattle



- On-site property management and small floor plates, make it an ideal choice for small to mid-sized tenants
- Pre-improved interiors with new carpet and paint for immediate occupancy



Kerry Carlson
Regional Vice President
kcarlson@legacypartners.com

425.372.5500

Kathy Gehl
kgehl@legacypartners.com



Matthew Schreck
schreck@broderickgroup.com

425.646.3444

Jason Furr
furr@broderickgroup.com

KEY BANK BUILDING

10655 NE 4th Street | Bellevue, Washington

FOR LEASE

Suite <small>(click below to view layout)</small>	SF	Rate	Description/Features	Available
	1,957	\$32.00 PFS	Suite offers 5 window-lined offices, conference room, and break room.	09.01.12
	3,552	\$33.00 PFS	Penthouse suite includes 5 window-lined offices, 2 conferences rooms, and break room. Suite includes custom built-in furniture.	Now



Kerry Carlson
Regional Vice President
kcarlson@legacypartners.com

425.372.5500

Kathy Gehl
kgehl@legacypartners.com

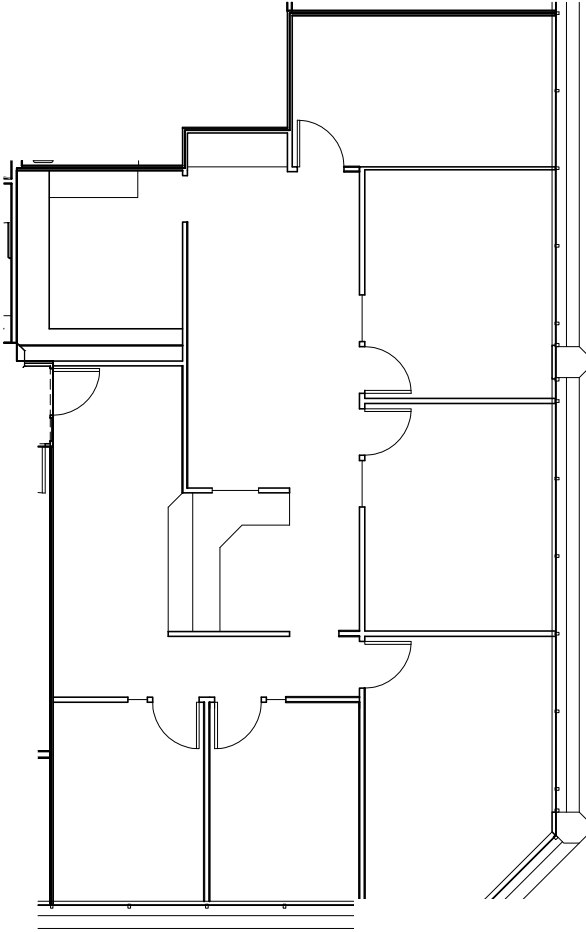
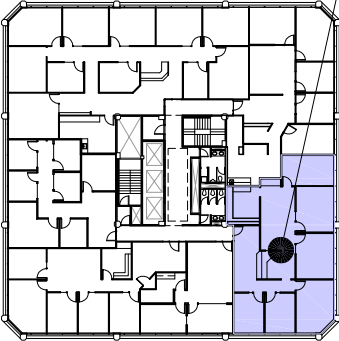


Matthew Schreck **Jason Furr**
schreck@broderickgroup.com furr@broderickgroup.com

425.646.3444

Suite 705 | 1,957 SF

SEE ENLARGED FLOOR PLAN



Kerry Carlson
Regional Vice President
kcarlson@legacypartners.com

425.372.5500

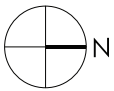
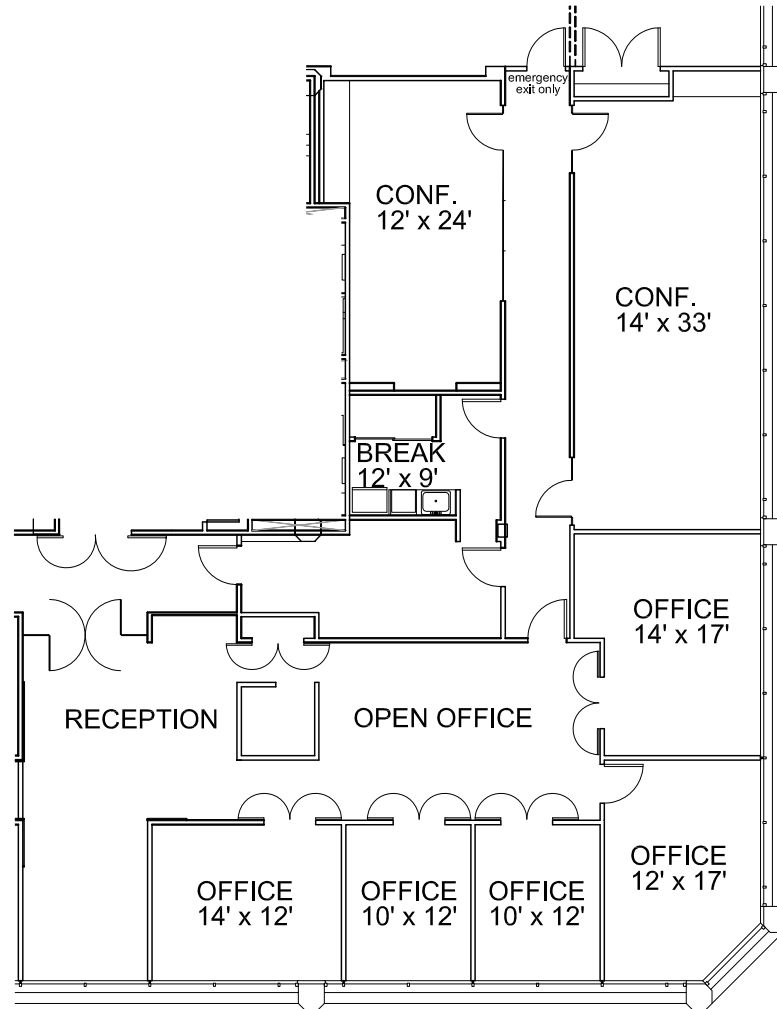
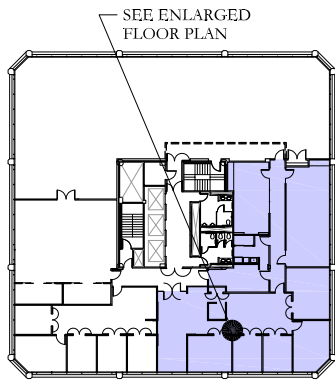
Kathy Gehl
kgehl@legacypartners.com



Matthew Schreck **Jason Furr**
schreck@broderickgroup.com furr@broderickgroup.com

425.646.3444

Suite 900 | 3,552 SF



Kerry Carlson
Regional Vice President
kcarlson@legacypartners.com

425.372.5500

Kathy Gehl
kgehl@legacypartners.com



Matthew Schreck
schreck@broderickgroup.com

Jason Furr
furr@broderickgroup.com

425.646.3444

FEATURES & LOCATION

Building & Area Amenities

- Extensive common area renovation recently completed with Class A lobby finishes
- Sweeping views of Downtown Bellevue, Lake Washington and Seattle
- Office suites ideal for small to mid-size tenants
- Pre-improved interiors with new carpet and paint for immediate occupancy
- On-site property management office and tenant conference room
- Parking ratio up to 4.3/1,000 sf
- Excellent proximity and easy access to I-90, I-405 and the 520 Bridge
- Great proximity to restaurants, hotels and shopping, including Bellevue Square and The Bellevue Galleria



Key Bank Building has been recognized by the U.S. Environmental Protection Agency as a top performing commercial building based on its effective energy management practices and innovative efficiency solutions.



Kerry Carlson
Regional Vice President
kcarlson@legacypartners.com

425.372.5500

Kathy Gehl
kgehl@legacypartners.com



Matthew Schreck
schreck@broderickgroup.com

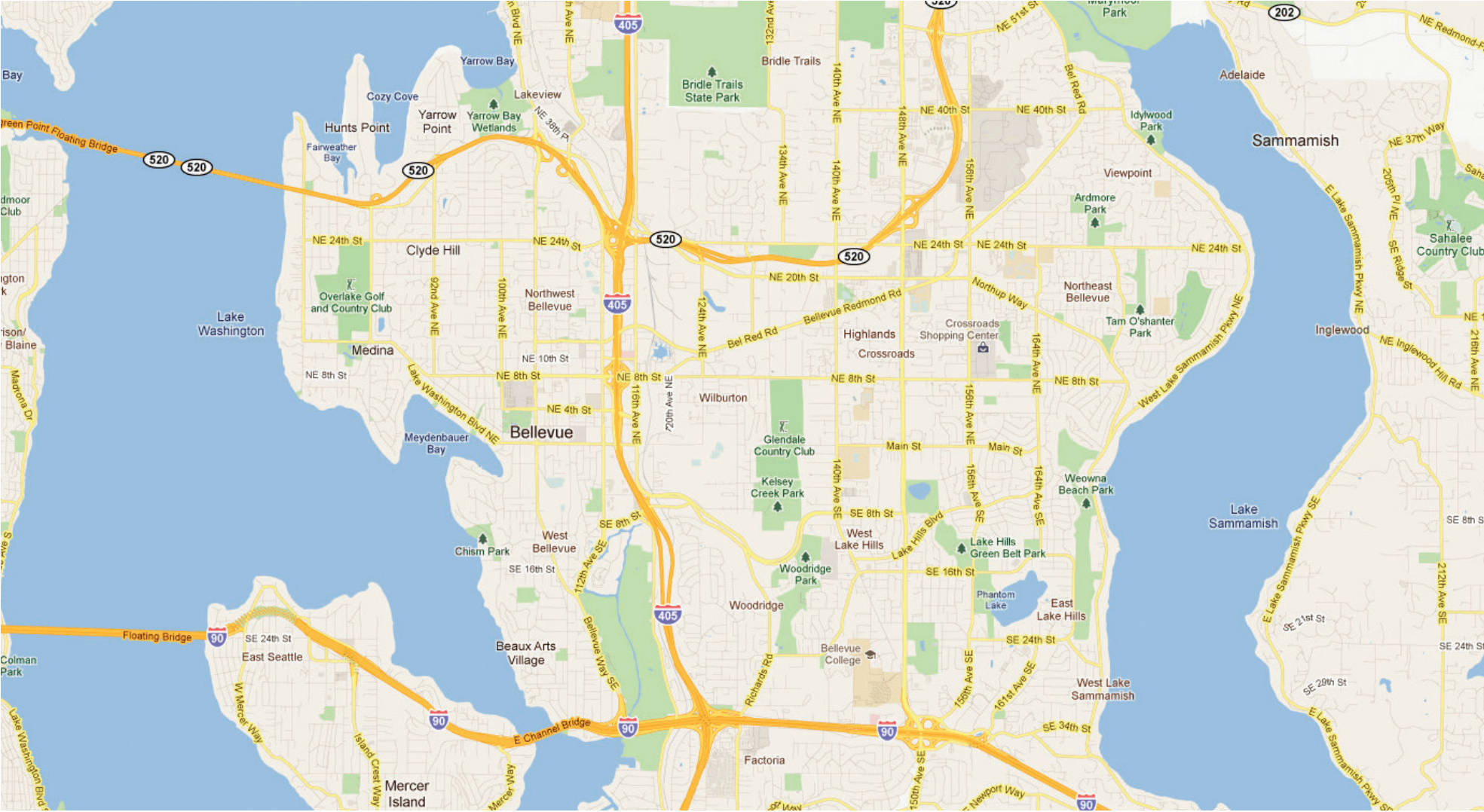
425.646.3444

Jason Furr
furr@broderickgroup.com

KEY BANK BUILDING

10655 NE 4th Street | Bellevue, Washington

MAP



Kerry Carlson
Regional Vice President
kcarlson@legacypartners.com

425.372.5500

Kathy Gehl
kgehl@legacypartners.com



Matthew Schreck
schreck@broderickgroup.com

Jason Furr
furr@broderickgroup.com

425.646.3444

KEY BANK BUILDING

10655 NE 4th Street | Bellevue, Washington

AMENITIES MAP



Kerry Carlson
Regional Vice President
kcarlson@legacypartners.com

425.372.5500

Kathy Gehl
kgehl@legacypartners.com



Matthew Schreck
schreck@broderickgroup.com

Jason Furr
furr@broderickgroup.com

425.646.3444



www.legacypartners.com

Kerry Carlson
kcarlson@legacypartners.com

Kathy Gehl
kgehl@legacypartners.com

T: 425.372.5500
F: 425.372.5520

A complete listing of properties
for lease can be found at:
www.legacypartners.com



www.broderickgroup.com

Matthew Schreck
schreck@broderickgroup.com

Jason Furr
furr@broderickgroup.com

425.646.3444