

Jobe Building II

15340 NE 92nd Street, Redmond, WA

AVAILABLE SPACE

Suite B

Total Size: 11,398 SF

Office Area: Approximately 4,500 SF

- Reception area
- One private office; open office area
- Large conference room
- Break room with sink/counter
- Copy center
- Server room
- Storage room

R & D Lab Areas: Large Lab: Approximately 2,200 SF

- Six counters with sinks and fume hood
- D.I. water distributed
- HVAC (Rex)

SEM/Plasma Room: Approximately 1,500 SF

- Two sinks/counter areas
- HVAC (Rex)

Warehouse Area: Approximately 3,000 SF

- High bay storage area – 20' clear height
- Dock-high and grade-level loading

Building:

- Electrical upgraded (400 amps serviced, 75 KVA transformer)

For further information, please contact:



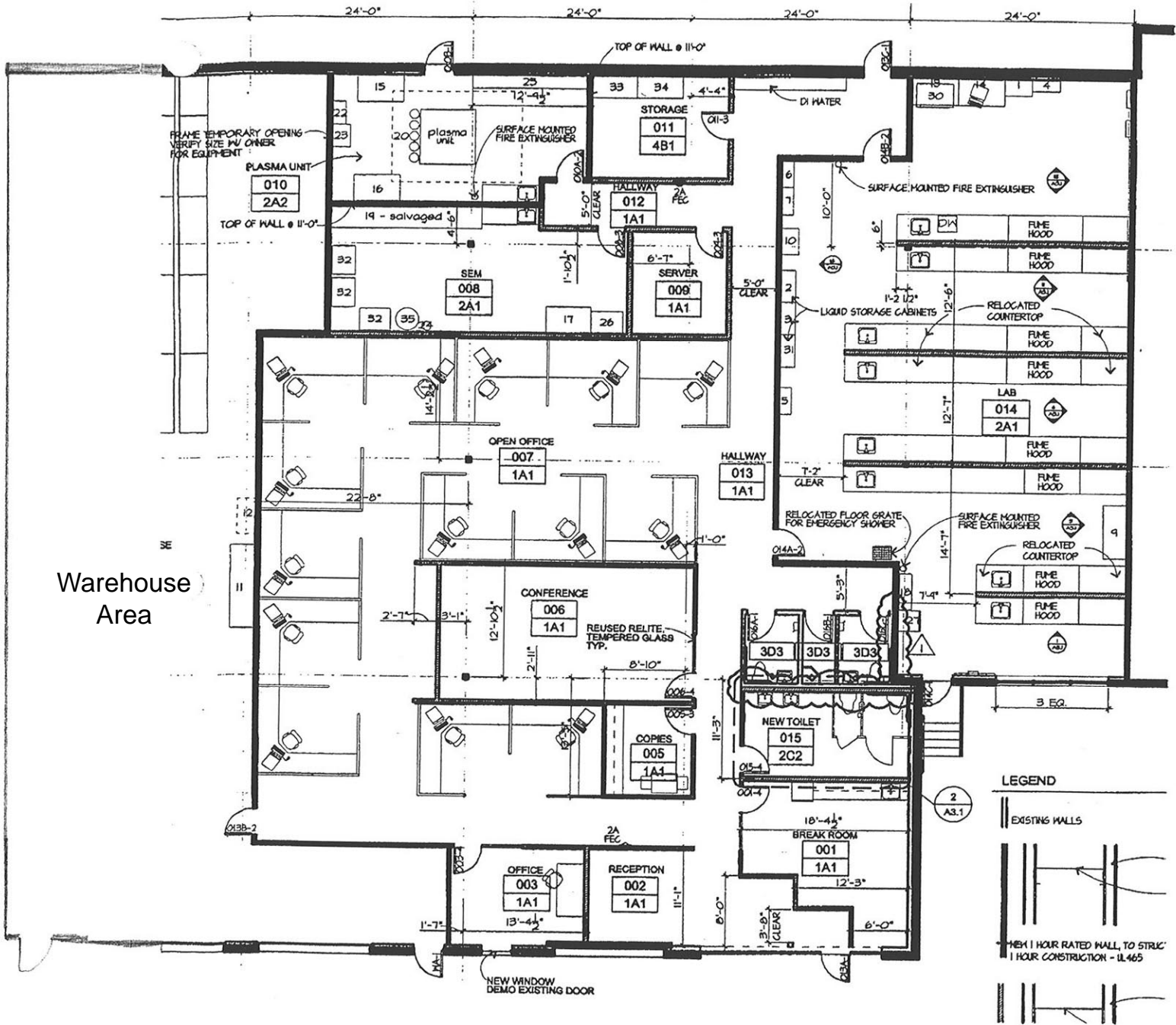
AL HODGE • 425.646.5240 • hodge@broderickgroup.com

JOE RAZORE • 425.646.5243 • razore@broderickgroup.com

Jobe Building II

15340 NE 92nd Street, Redmond, WA

SUITE B



For further information, please contact:



AL HODGE • 425.646.5240 • hodge@broderickgroup.com

JOE RAZORE • 425.646.5243 • razore@broderickgroup.com