

# HIGHLANDS CAMPUS TECH CENTRE ♦ BLDG B

Office & Flex ♦ 4,831 RSF & 9,201 RSF Spaces



21312 30<sup>th</sup> Drive SE, Bothell, WA 98021

## PROPERTY HIGHLIGHTS

- Office and/or office/warehouse space
- Ample parking: 3 stalls per 1,000 SF
- On-site deli
- 13-acre campus setting at entrance of Highlands Campus

## AVAILABLE SPACE

- Suite 200 – 9,201 RSF (100% office)
- Suite 105 – 4,831 RSF Total  
(2,667 SF Warehouse; 2,164 SF Office)

*All suites are available now.*

## FOR LEASE INFORMATION

Contact:

**Paul Jerue**

(425) 646-5223

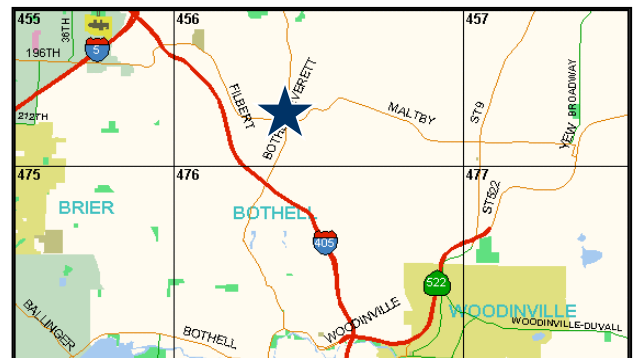
jerue@broderickgroup.com

**Chris Langer**

(425) 646-5228

langer@broderickgroup.com

Broderick Group, Inc.  
10500 NE 8<sup>th</sup> Street, Suite 900  
Bellevue, WA 98004  
Fax 425.646.3443  
www.broderickgroup.com



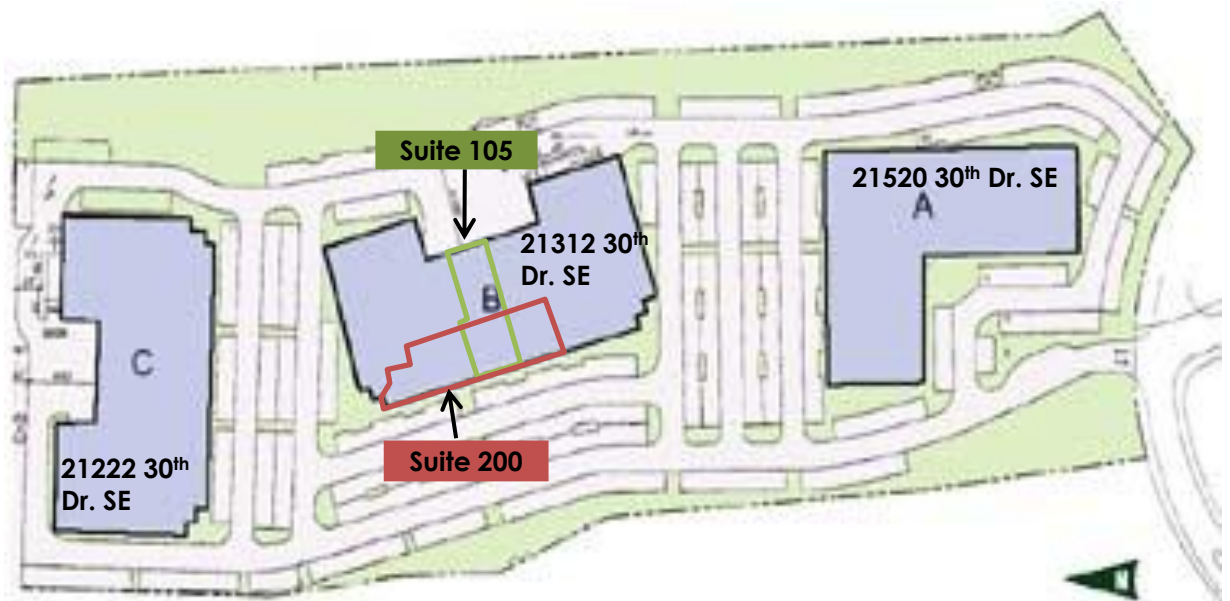
# HIGHLANDS CAMPUSTECH CENTRE ♦ BLDG B

21312 30<sup>th</sup> Drive SE, Bothell, WA 98021

## AVAILABLE SPACE

Suite	Floor(s)	Total SF	Office SF	Warehouse SF
105	1	4,831 SF	2,164 SF	2,667 SF
200	2	9,201 SF	9,201 SF	0

## SITE PLAN

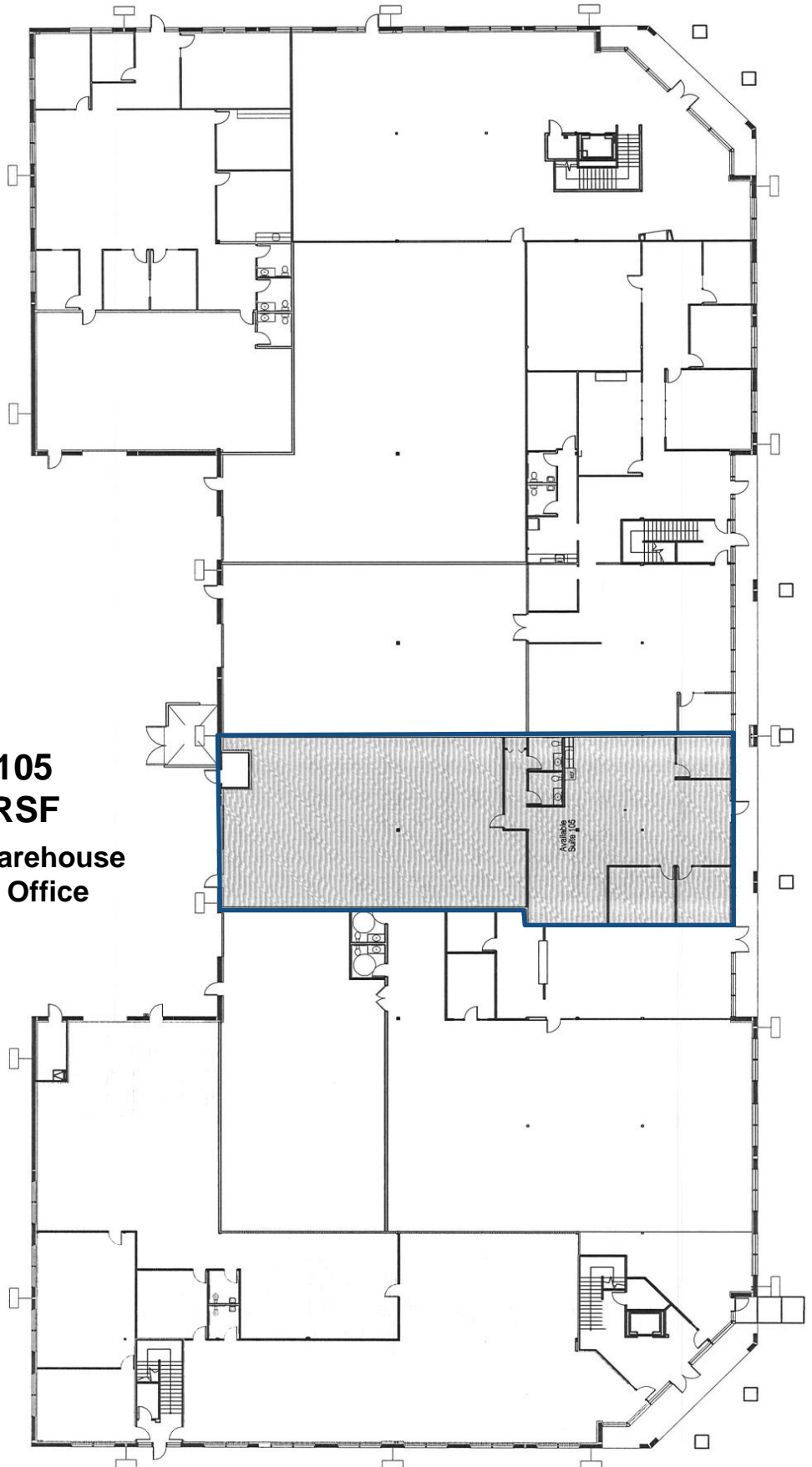


# HIGHLANDS CAMPUSTECH CENTRE ♦ BLDG B

21312 30<sup>th</sup> Drive SE, Bothell, WA 98021

## 1<sup>st</sup> FLOOR

**Suite 105**  
**4,831 RSF**  
2,667 RSF Warehouse  
2,164 RSF Office



# HIGHLANDS CAMPUSTECH CENTRE ♦ BLDG B

21312 30<sup>th</sup> Drive SE, Bothell, WA 98021

## 2<sup>ND</sup> FLOOR

### Suite 200 9,201 RSF Office

