

# LIBERTY PARK

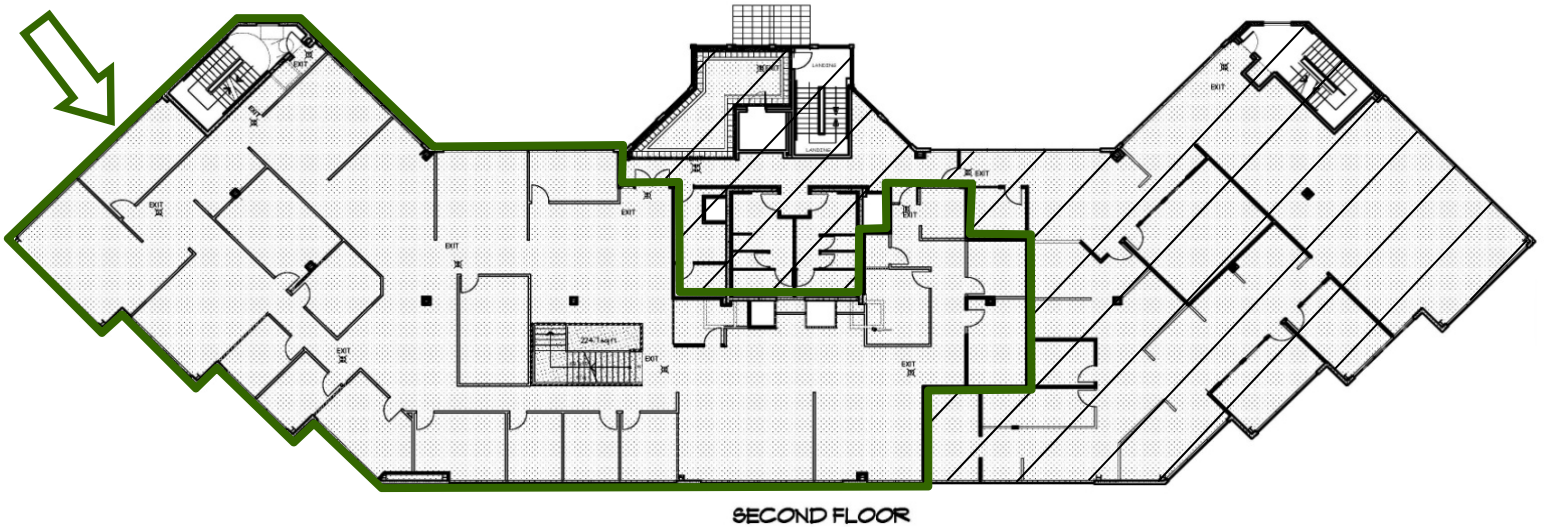
371 NE GILMAN BOULEVARD  
ISSAQUAH, WA

**9,290 RSF AVAILABLE – 2<sup>ND</sup> FLOOR – SUITE 200**  
**WITH SUITE 100 = 19,515 RSF**

\* Suites  
260/100/200  
can combine  
for  
**25,140 RSF**



**Suite 200**  
**9,290 RSF**



SECOND FLOOR

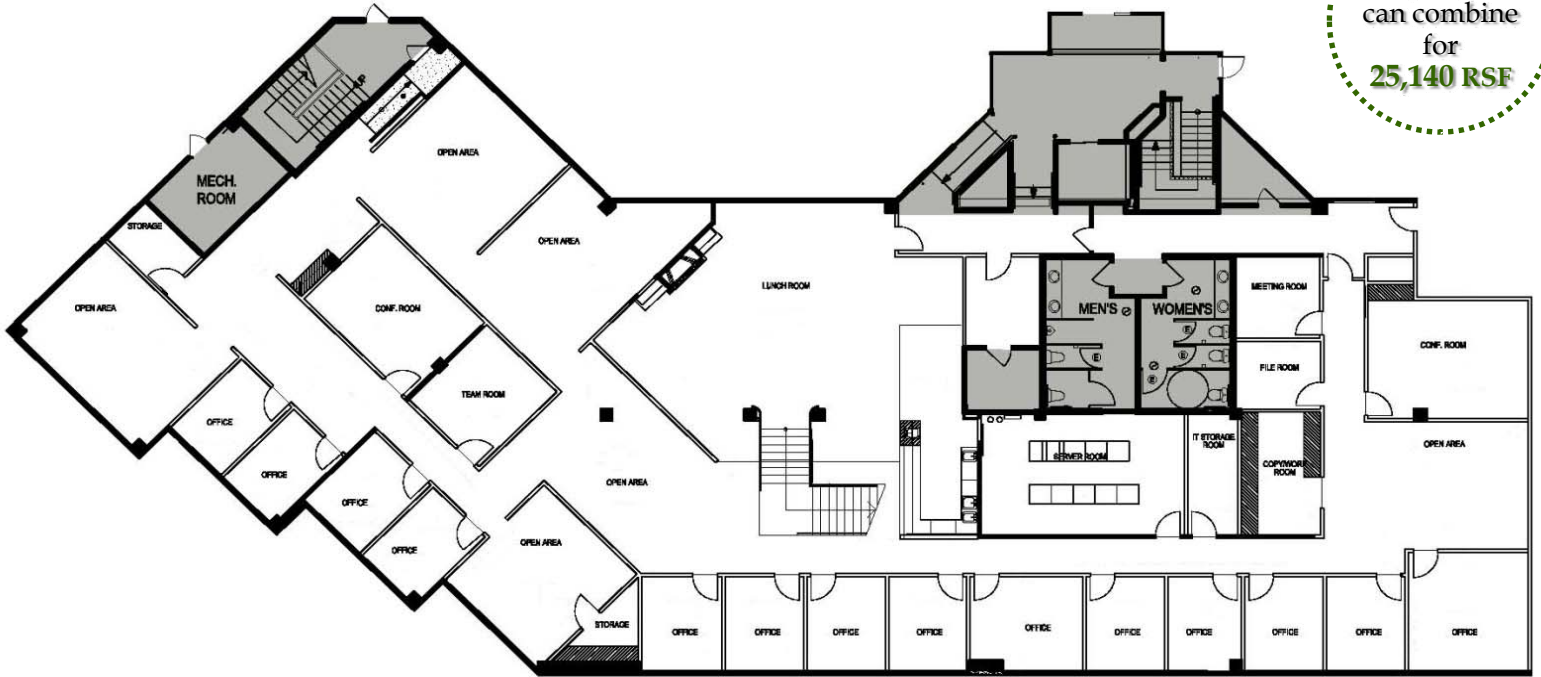


# LIBERTY PARK

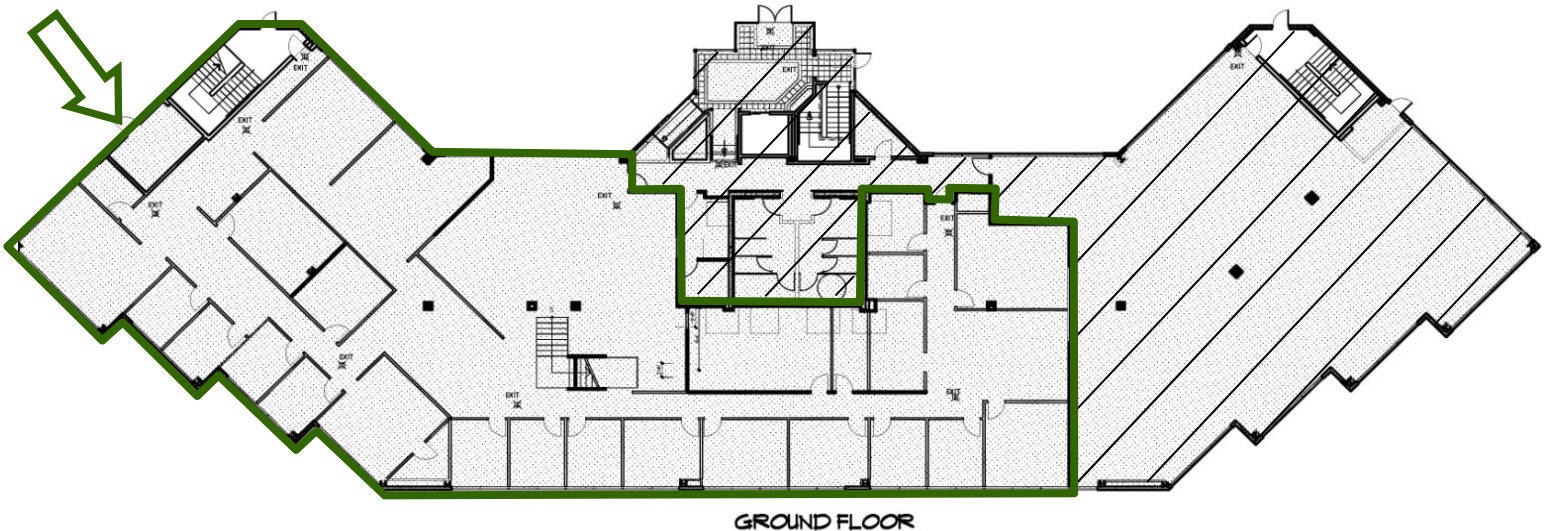
371 NE GILMAN BOULEVARD  
ISSAQUAH, WA

**10,225 RSF AVAILABLE – 1<sup>ST</sup> FLOOR – SUITE 100**  
**WITH SUITE 200 = 19,515 RSF**

\* Suites  
260/100/200  
can combine  
for  
**25,140 RSF**



**Suite 100**  
**10,225 RSF**



GROUND FLOOR



12/10/2010



12/10/2010



12/10/2010



12/10/2010